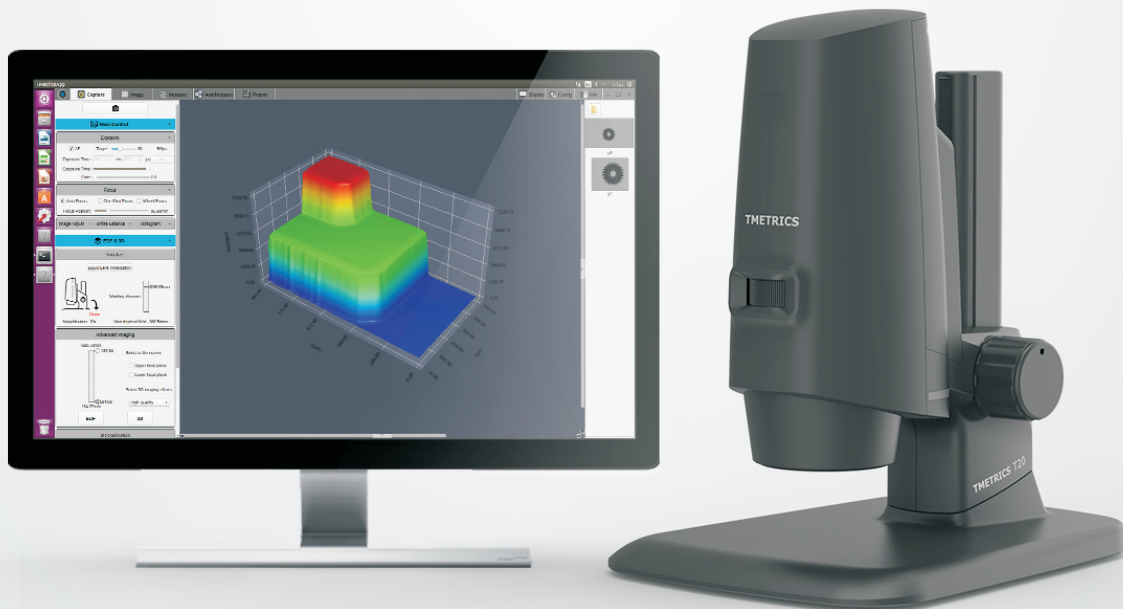


TUESSEN

TMETRICS T20

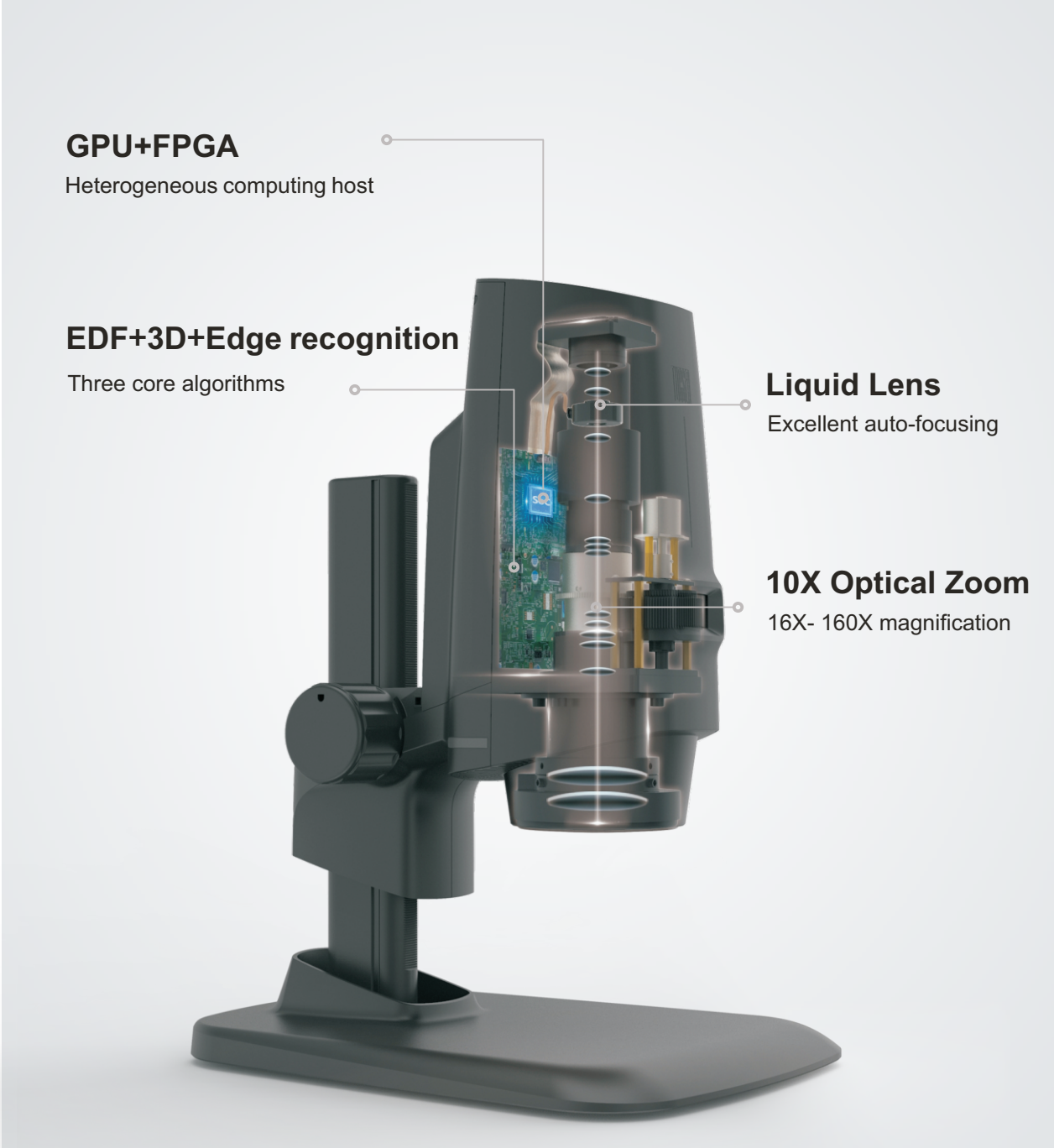
3D-Super Depth of Field Microscope

Greatly improve the microscopy observation,
measurement and analysis efficiency!



System Upgrade

Core technology creates strong linkage performance



Simple but Powerful All-in-one Design

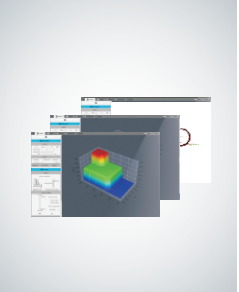
Highly integrated, equal to five professional equipment in one



Stereoscopic microscope



High speed & dynamic color camera



Microscopy image analysis software



Precision Z-axis electronic platform



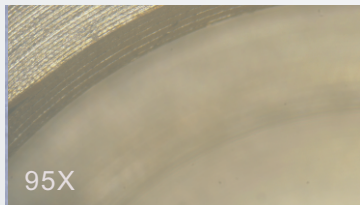
High performance mainframe

No computer is required, all functions can be completed by mouse

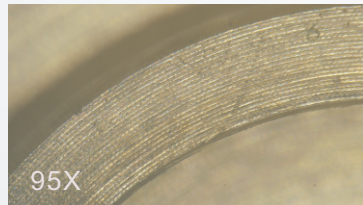


Observation Upgrade

Observe under high magnification,
microscope cannot focus on multiple layers at the same time.



Focus position: the highest layer



Focus position: middle layer



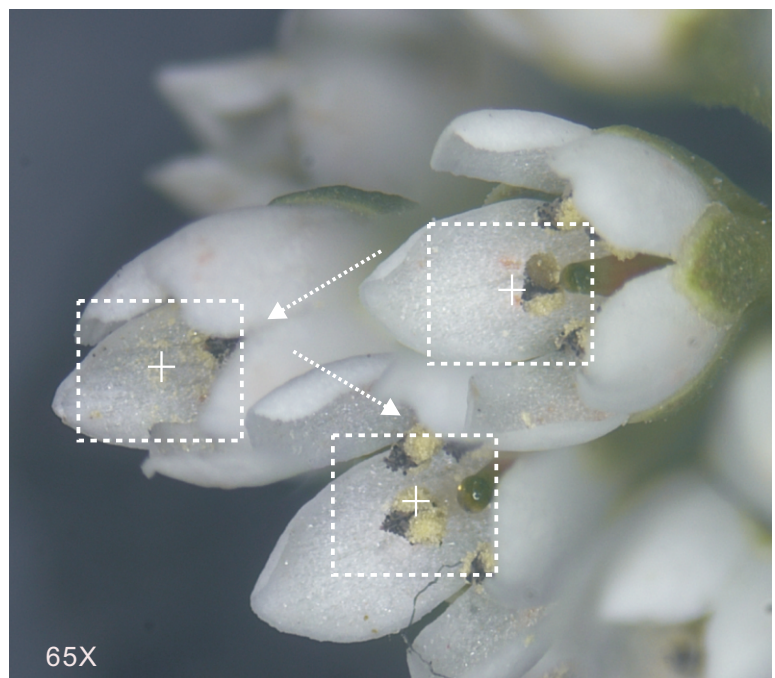
Focus position: lowest layer

16-160X magnification observation, high-speed auto focus throughout

When observing a sample with an ordinary microscope, manual focusing is required repeatedly, which is cumbersome and inefficient. T20 adopts liquid lens for high-speed auto-focusing, supports 16-160x microscopic magnification observation, and instantly auto-focus at the mouse click, eliminating the need for repeated manual adjustments in the past, and microscopic observation is simpler and smoother.



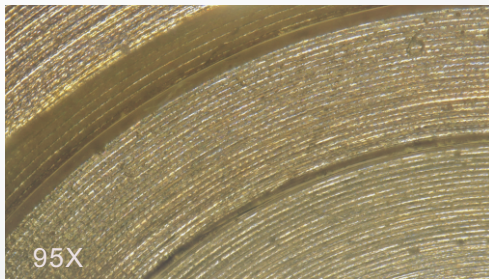
No manual focus operation required



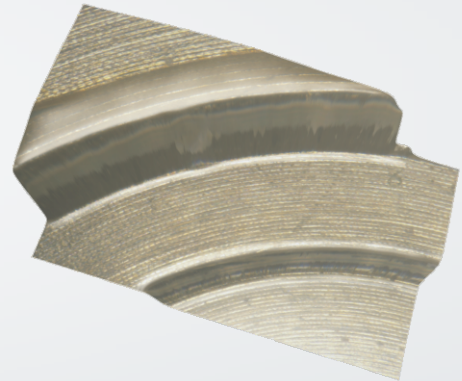
65X

Clear and Efficient Microscopic Observation

T20 super depth of field achieves clear and 3D microscopic observation



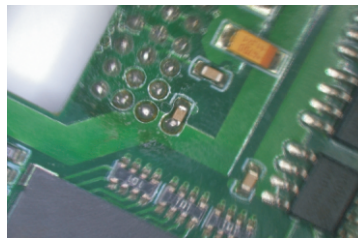
Real-time EDF, focus full width in one second



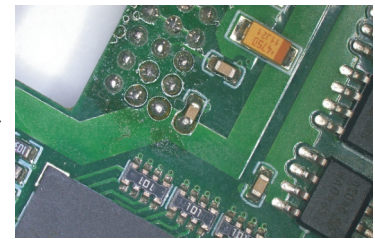
3D display, observe three dimensional shape features

Real-time depth of field (EDF), reduce blurry and false images

It is easy to cause angle deviation, rotation and uneven focal plane when using third-party software and hardware systems to expand the depth of field, T20's optical-mechanical-electrical integration structure and linkage algorithm technology can solve the above problems and obtain a clear and correct full-frame focus picture.



EDF diagram of third-party software and hardware systems



Tucsen T20 integrated system EDF diagram

Real-time wide dynamic (WDR), effectively eliminate strong reflections on metal surface

The strong reflection of the metal surface can easily cause the loss of detailed information and affect the judgment. The T20 WDR mode can create images with perfect exposure and clear light and dark details by calculating the data of multiple images with different brightness in real time.



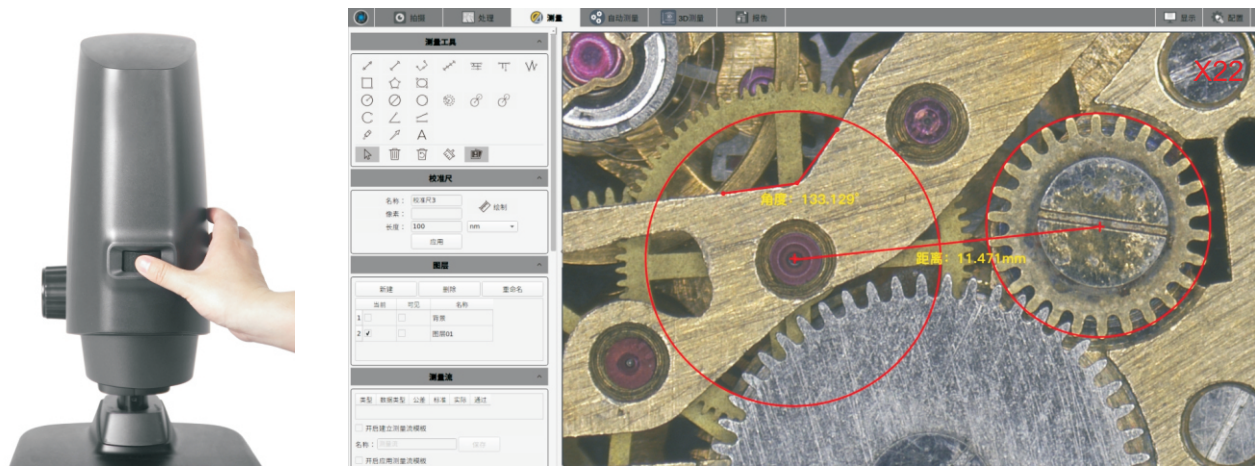
Before WDR



After WDR

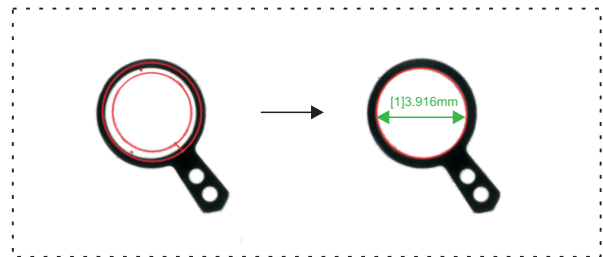
Measurement Upgrade

Real-time measurement, no need to recalibrate in auto focus and zoom mode



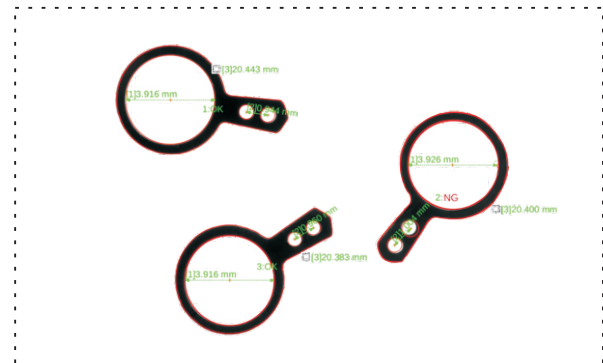
Automatic edge extraction to eliminate human error

T20 automatic edge extraction function can quickly perform standard modeling work without manual precise positioning, 3 micron resolution, automatic measurement accuracy ≤ 5 microns, repeat accuracy ≤ 3 microns, effectively eliminating human operation errors.



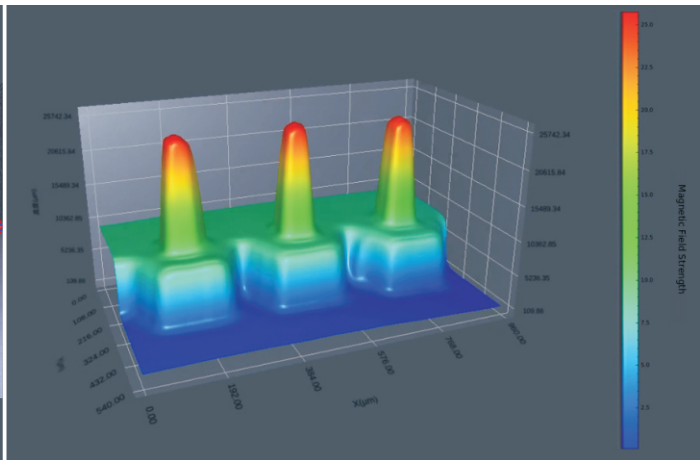
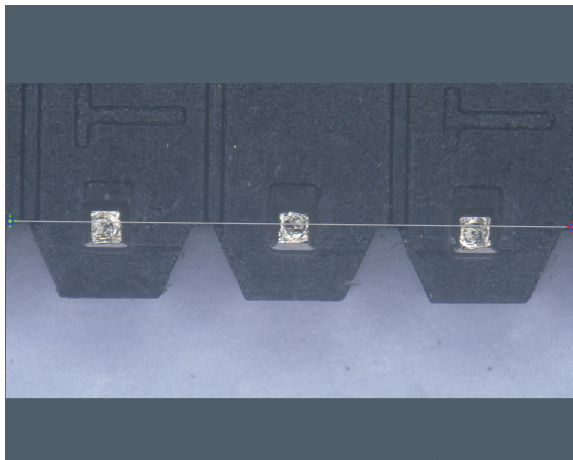
Automatic batch measurement to improve work efficiency

After completing the standard modeling of small devices, T20 can quickly complete the batch measurement work of other samples, export data information of multiple samples in one time, greatly improve work efficiency.



Continuous and Complete Measurement Data Recording

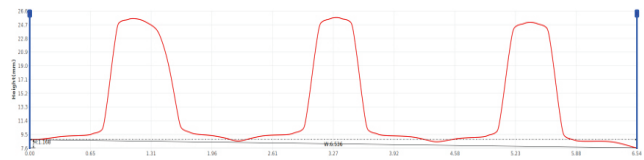
Available to do 3D measurement at any position



Width: 6.536mm, Altitude: 1.168mm

Diversified tools, real-time data recording

T20 provides a wealth of measurement and analysis tools, and can record data in real time. The Z-axis measurement accuracy of ≤ 50 microns and the repeatability of ≤ 5 microns can meet the needs of most microscopic measurement.



	X1	Y1	X2	Y2	Distance	HeightDiff	
1	6.68	232.07	951.65	242.09	6.536	1.168	Save

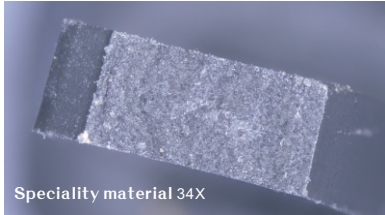
高度
 曲率
 面积
 粗糙度

Data can be exported with automatically reports created

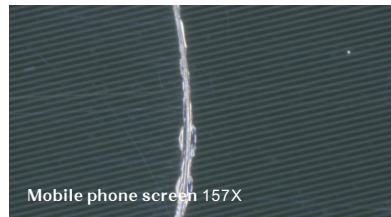
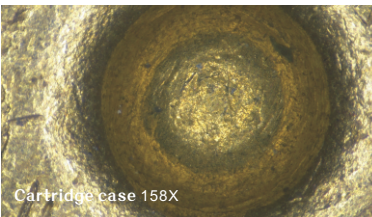
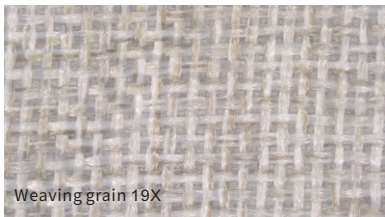
T20 can not only save image and video data, but also automatically create test reports with pictures and texts. All data in the workflow can be exported, when the operation is over, the work is completed, quite simple and easy!

Reference Cases

Material section analysis



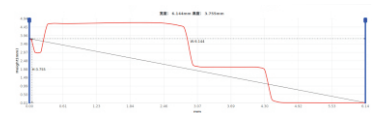
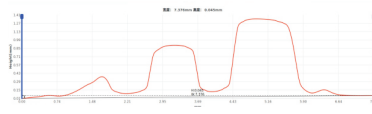
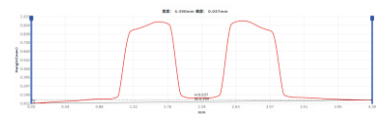
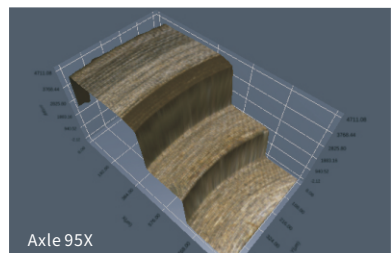
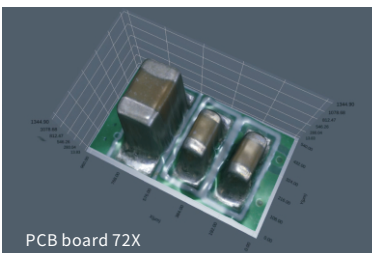
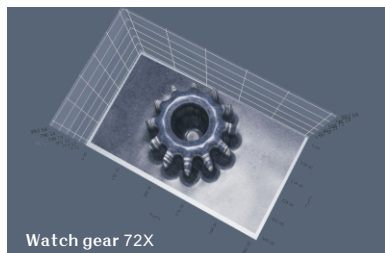
Surface mark inspection



Biological observation



Parts measurement



Tucsen Photonics Co., Ltd.

Tel: 400-075-8880

Email: support@tucsen.com

Add: 5# Wanwushe Smart Industrial Park , No.2 Yangqi Branch Rd,
Gaishan Town, Cangshan Area, Fuzhou, Fujian, PRC, China.

www.tucsen.com