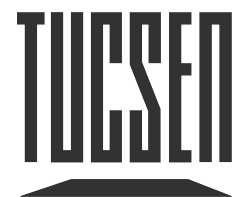




# TrueChrome Series

## HDMI High-Speed Color Micro Camera

Camera with built-in mouse control function, using a HDMI dedicated HD display, to bring you the perfect mobile unit for a scientific photography anywhere.



ISO9001 CE  RoHS

[www.tucsen.com](http://www.tucsen.com)

# Built-in Mouse Control

---

The TrueChrome series possesses perfect color reproduction capability, allowing users to perform the following through their mouse in HDMI mode: capture, processing, measurement, save, export etc, The camera is extremely easy to use as it can be operated without a computer. Users can choose the most suitable model based on different applications.

- TrueChrome AF
- TrueChrome Metrics
- HD Lite



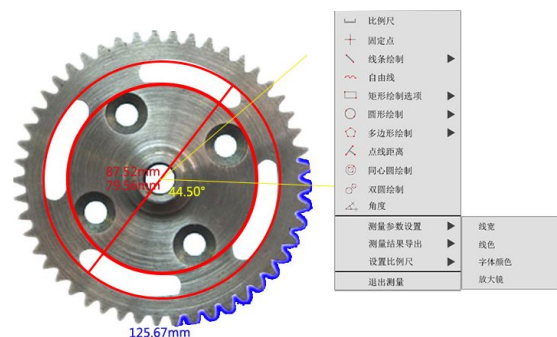
## TrueChrome AF Built-in autofocus

TrueChrome AF offers both continuous and single-shot autofocus modes. It also supports mouse wheel control for fine-tuning. Data transfer up to 60 frames per second enables users to get clear images with ease.



## The Essence of TrueChrome Metrics

TrueChrome Metrics provides extremely powerful measurement functionalities including, freehand line, rectangle, polygon, circle, bicircle, angle, point-line distance and much more. Three different length units of millimeter, centimeter, and micrometer are provided to meet various measurement requirements in different applications.

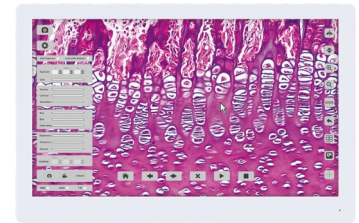


# Tailored 1080P HD screen

---

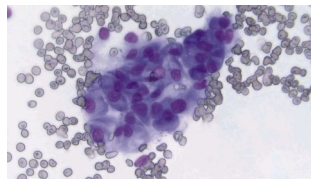
The excellent quality of Tuscan cameras provide the user with a premium experience. This is evident with the specially customized 1080P high-definition display Retina Screen, which perfectly matches the performance of the TrueChrome camera.

Note: Retina Screen is an optional accessory that users can choose to use.



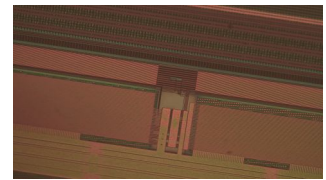
## Sample >> Applications

### Pathological analysis



Pathological analysis requires that the image color fidelity be 100% accurate, especially for digital imaging, it has great claims for the purple blue color rendition. With perfect performance for purple blue colors, TrueChrome Metrics ensures precise and accurate pathological images.

### Material qualification



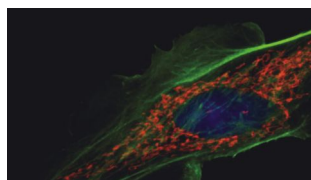
Industry applications highly require excellent clear and sharp images without any delay, up to 60fps high definition live preview from TrueChrome Metrics allows you to comfortably and efficiently perform quality inspection.

### Teaching



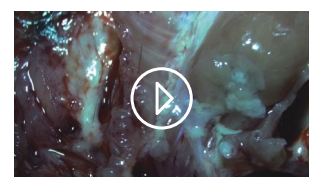
In teaching presentations, the lecturer can use a computer to set up a specimen and project the specimen images to a big screen for students to view. TrueChrome Metrics allows a dual live video stream to a PC and any imaging device with HDMI interface.

### Fluorescence imaging



When it comes to low light applications, it crucial to have a high sensitivity camera, with up to 10 seconds exposure capability. This means the TrueChrome Metrics is 300 times more sensitive than the other HDMI cameras in the market.

### Medical anatomy recording



Need to record the microsurgery procedures clearly and fluently? TrueChrome Metric's high definition with fast speed recording capability offers superb documentation at 1080P 30fps.

## Camera Specification

Model	TrueChrome AF	TrueChrome Metric	HD Lite
Sensor	CMOS	CMOS	CMOS
Sensor Size	1/2.8"	1/2.8"	1/2.5"
Preview Resolution	2MP, 1920x1080	2MP, 1920x1080	5MP, 2592x1944
Capture Resolution	6MP, 3264x1836	6MP, 3264x1836	5MP, 2592x1944
Frame Rate	35fps @USB2.0 60fps @HDMI	30fps @USB2.0 30fps @HDMI	15fps @USB2.0 15fps @HDMI
Capture	SD card(16G)	SD card(16G)	SD card(8G)
Video Recording	30fps @SD 30fps @PC	30fps @SD 30fps @PC	15fps @SD 15fps @PC
Exposure Mode	Auto/Manual	Auto/Manual	Auto/Manual
Exposure Time	2ms~10s	2ms~10s	2ms~10s
White Balance	Auto/Manual	Auto/Manual	Auto/Manual
Setting	White Balance,Exposure Time,Noise,Reduction, Gain,Gamma,WDR	White Balance,Exposure Time,Noise,Reduction, Gain,Gamma,WDR	White Balance,Exposure Time,Noise,Reduction, Gain,Gamma,WDR
Built-in Software	Cloud 1.0 Ver	Cloud 1.0 Ver	Cloud 1.0 Ver
PC Software	Mosaic V2	Mosaic V2	Mosaic V2
Data Interface	USB2.0,SD,HDMI	USB2.0, SD, HDMI	USB2.0, SD, HDMI
Optical Interface	Windows 7/8/10(32/64bit), Mac	Windows 7/8/10(32/64bit), Mac	Windows 7/8/10(32/64bit)
Optical Port	Standard C-Mount	Standard C-Mount	Standard C-Mount
Camera Size	90.7x78x70.8(mm)	90.7x78x70.8(mm)	90.7x74.5x67.2(mm)
Camera Weight	460g	448g	272g

## Retina Screen Features

Display Resolution	1080P(1920x1080)	Display Type	IPS-Pro
Screen Size	11.6 inch	Aspect Ratio	16:09
Brightness	320 cd/m2	Static Contrast Ratio	1000:01:00
HDMI Port	1	Power Supply Type	12V, 2A
Size	282.0x180.5x15.3 (mm)	Size & Weight	600g

## System Components

One screen with brackets

One camera (with SD card)

Five butterfly screws

HDMI L shaped adapter

12V/2A power adapter

Y power splitter cable

2m HDMI cables

0.5m HDMI cables

USB mouse and cable



Note: It is recommended to use the TrueChrome camera combo kit with complete accessories and plug and play.

## Tucsen Photonics Co., Ltd.

Add: 5# Wanwushe Smart Industrial Park ,  
No.2 Yangqi Branch Rd, Gaishan Town,  
Cangshan Area, Fuzhou, Fujian, PRC, China.  
Tel: +86-591-28055080  
Web: [www.tucsen.com](http://www.tucsen.com)  
E-mail: [support@tucsen.com](mailto:support@tucsen.com)

Specifications in this manual are subject to changes without prior notice.